

Define Yourself, Redefine the World



**CAREER POINT
UNIVERSITY**

www.cpur.in | www.cpuh.in

Career Point University » *An Immersive Learning & Living Experience Spread Across 50 Acres.*

Our Universities are having state-of-the-art infrastructure, best academic facilities and experienced faculty to help you to realise your full potential. We follow time-tested internationally acclaimed credit based system. All our courses are designed to provide you excellent learning, requisite expertise, rewarding qualification, practical exposure, hands-on-learning and desired skills for a successful career.



Career Point University, Rajasthan

Campus is spread over 50 acres and situated at education city Kota in the state of Rajasthan. It was established in 2012 by Rajasthan State Legislature under "Career Point University Act". It is UGC approved government recognised university with the right to confer degree as per the section 2(f) & section 22(1) of the UGC Act, 1956.



Career Point University, Himachal Pradesh

Career Point University, Himachal Pradesh: Campus is spread over 30 acres, surrounded with lower Himalayas at Hamirpur district in the state of Himachal Pradesh, India. It was established in 2012 by the Himachal Pradesh State Legislature under "Career Point University Act". It is UGC approved government recognised university with the right to confer degree as per the section 2(f) & section 22(1) of the UGC Act, 1956.

Our Recognitions & Approvals



Our Knowledge Partners



Top Reason to Choose **CAREER POINT UNIVERSITY**

Selecting a university program is beginning of new chapter in student's life that takes you one step closer to your career goals.

Our advanced facilities, combined with the guidance of our expert faculty, can help turn your raw talent and enthusiasm into the specific skills and knowledge needed to succeed in your chosen career, and to meet life's challenges head-on.

If you Join Career Point University, you can be confident that you'll receive a first-class education with a focus on practical skills and professional relevance, giving you excellent prospects for employment and career development.



INSIDE

04 CPU Academic System
05 Teaching & Learning
06 Faculty
07 Campus
08 Research Innovation & Entrepreneurship

09 Office of International Affairs
10 Student Development
14 Campus Life
15 Sports & Recreation
16 Training & Placement

18 Convocation
19 Academic & Career Program
40 CPU Campus Life
42 Eminent Personalities Visited

44 Glimpses of Experiential Learning
46 From Campus to Leading Corporate

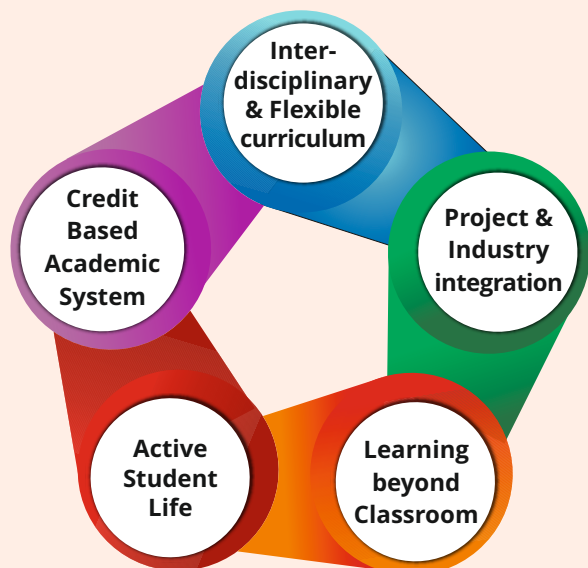
CPU ACADEMIC SYSTEM - *Knowledge that Works*



Career Point University's academic system works with "Student First" approach and takes all necessary actions to provide best education and facilities to our students. Academic system at Career Point University is built around experimental learning where the students are motivated to understand conceptual framework and apply them.

Career Point follows the world's best IIT education system to support every student to realize their potential with an experiential approach in the academics. The academic system of Career Point University is students centric giving students an opportunity to participate to enhance their knowledge, skills and understanding in multi-disciplinary environment through practical experience to ensure that knowledge imparted to student works to build a strong career.

Key aspects of CPU academic system are



The academic system of CPU is just not limited to course curriculum but also to inculcate various skills which are essential for student to become professional and leaders of tomorrow.



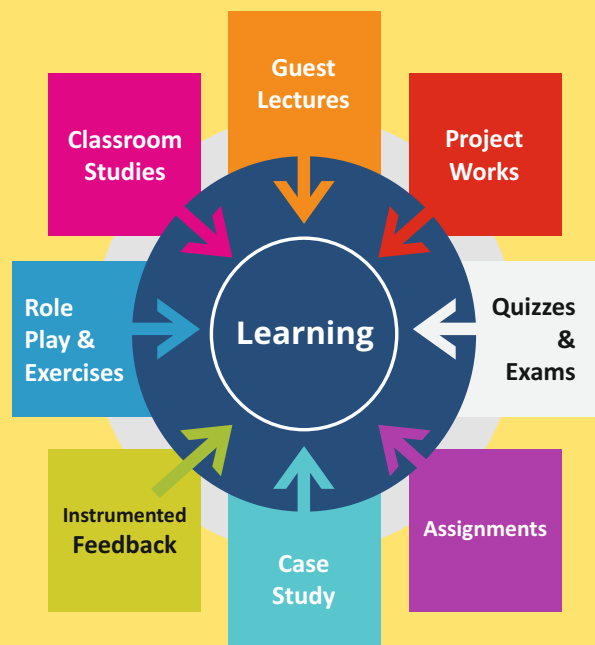
TEACHING AND LEARNING - *Knowledge that Works*



Students learn best when they are actively participating, whether that be through focused listening, discussion, problem solving or explaining to others. The teaching and learning at CPU encourages critical thinking and analysis.

We pride ourselves on the quality of the education we provide. All subjects are taught by experts as per the latest industry requirements, ensuring that outdated techniques are eliminated from the course content. Practical skills are a vital part of any course, and it is important that the laboratory and project work should integrate well with the taught courses. As such, not only laboratory experience but also individual and team project work are given a high priority during the teaching and learning at CPU.

All the courses at CPU are designed as per the needs of industry to ensure you acquire the skills and knowledge necessary in your chosen career.



FACULTY - *Brightest Mind to Mentor the Best Brain*



To ensure high quality of teaching, our leadership team has handpicked teaching staff; majority of them are from premier institutions having distinguished academic achievements to their credit and are actively involved in teaching, research and consultancy.

We also have pool of experts from industry, business, government and research institution to ensure mix of real world experience and academia. The CPU faculty and staff work together to provide an outstanding learning environment for our students.



One-on-One Mentor-ship

To monitor the performance of the student, each student is assigned one faculty member as a mentor. Mentor records the profile of student with regards to academic performance and participation in extra-curricular activities. Mentor help students build a set of curricular & extracurricular experiences that align with their interests and goals. Students can contact their mentor for any academic or non-academic issue during the session for the solution.

CAMPUS - Academic Infrastructure



Career Point University campus is situated in a serene and pollution free environment. The University has modern and state-of-the-art infrastructure that goes a long way in facilitating a number of services for the students as well as the staff members. The campus has been designed by renowned architects specializing in educational architecture.

We pride ourselves on our dynamic and state-of-the-art campus having facilities which included classrooms equipped with latest teaching aids for focused learning, Auditorium which acts as a common ground for students, faculty and corporate personalities for regular interfaces, conferences and other events, library with the wide range of text books, reference books and journals by well-known Indian & International authors, computers & other laboratory with latest equipment, cafeteria, sports facilities, excellent student's amenities and much more. The campus provides an ambience perfectly conducive to teaching, learning and research



Academic Facilities-

- Classroom
- Video Lecture Library
- Laboratories & workshops
- Seminar & Conference Halls
- Language Lab
- Soft skill & Personality Enhancement Lab
- Moot Court, Open Theater, Reading & Presentation Rooms, Activity Centre etc.
- Library & e-Library
- Computer Centre
- Auditorium
- Academic Departments
- Centre for innovation

Other Facilities -

- Student Welfare & Amenities Centre
- Guest House
- Transportation
- Art & Culture Centre
- Xerox, Courier & Shopping etc
- Hostels (Boys & Girls)
- Cafeteria & Mess
- Medical and Fitness Centre
- Sports & Yoga
- Bank ATM



RESEARCH INNOVATION & ENTREPRENEURSHIP



Research

The Career Point University revels in having the highest standards of research with eminent research faculty to match the best in the region. Outstanding research works of our students have been rewarded with international and national recognition and awards.

Innovation

Career Point University has implemented an innovation fund policy to provide initial financial support to students who want to develop something innovative and useful for the society or the mankind. Later the option is always open to file a patent of the work done by the scholars. Hybrid Car and Commercial production of Solar Lamp are the initial appreciable steps taken by our students

Entrepreneurship

The University is inculcating such skills during the learning process so that the future leaders come forward and start their own venture as an "Entrepreneur". Instead of job seekers they should be job provider or employers.



Learning at ED Cell helped alot to our Startup

CPU has a dedicated Entrepreneurship Development Cell which educate & motivate students to become an entrepreneur.

During our college time we had decided to become an employer not an employee and guidance & learning at ED Cell helped us alot to raise funding of 80 lakhs for our startup.

We are thankful to CPU for what we are doing today without their guidance it would not be possible.

Rohan Sharma (CEO & Co-Founder, Zeppcross)

Nishant Sharma (Co-Founder, Zeppcross)



Quick Facts

572+

National / Int'l Conference

650+

Research Publication

700+

International Journal

178+

National Journal

60+

Chapter in Books

27+

Books

OFFICE OF INTERNATIONAL AFFAIRS (OIA)



About Office of International Affairs:

The Office of International Affairs (OIA) at CPU manages the various aspects of the Institute's international engagement. OIA takes various initiatives which are aimed to build cross-cultural competency and advocates a sense of global citizenship amongst students, faculty members, researchers and other professionals. Some of these initiatives are:

- International Admissions
- Students exchange programs
- Multi Campus programs with credits transfer
- Content integration and twinning programs
- International immersion & Study Tours
- Research collaborations
- Faculty exchange and training

OIA is in-charge of coordinating all international activities, advancing a strategic plan for internationalization, fostering & nurturing international partnerships, as well as developing innovative programs for faculty and students.

International Student Admission

Career Point University (CPU) welcomes students and interns from different parts of the world. With its global outlook, CPU offers learning opportunities both inside and outside the classrooms and provides an ideal platform to international students to pursue higher education and share experiences. Along with this, the facilities and extra-curricular activities within the university provide students a truly vibrant campus life. The University highly values the diversity and promotes international & multicultural understanding.

The Office of International Affairs is nodal point to one point contact for all international students in case they require any kind of support.



Career Point University gave me the opportunity to undergo my Doctoral studies without stress.

The interaction between students and supervisors was just the best. I am Glad to be identified with CP University.

Michael Esew (PhD Research Scholar)

STUDENT DEVELOPMENT - Academic



We understand that student's success is not solely defined by grades - in today's world students must have excellent life skills. Skills like - leadership skills, team skills, decision making, ability to think on feet, presentation skills, analytical bent of mind, innovation, Pleasing personality, communication skills, positive attitude etc. are few of the qualities which we aim to develop among the students through various student development programs hence enabling them to effortlessly face the challenges of corporate world.



STUDENT DEVELOPMENT - Technical



Learning Beyond Classroom

CPU encourages students to actively engage in various activities for intellectual development. Various events like Academic Conferences, Paper Presentation, Project, Tech-Exhibitions and participation in IITs events. Experts Lectures, Technical workshops & seminars, visit to industries and working on Live Projects complement classroom learning and foster academic & technical leadership of students.



STUDENT DEVELOPMENT - Social



CPU motivates students to participate in community services & social work. Participation in such events has many positive effects on student's personality & make them responsible professional.



STUDENT DEVELOPMENT - Cultural



To felicitate learning beyond classroom a platform has been provide to students of CPU to take part in Asia's largest cultural festivals conducted at IITs. A Teams of CPU students participate in various extracurricular events like solo song, dance, paper writing and skit.



CAMPUS LIFE



Residential Facilities & Living on Campus

Residing on campus offers you a sublime and serene environment conducive to learning. Our hostels and student facilities are conveniently located within an easy walk to classes, library, computer labs and hobby & club activities.

When you live on campus, you can attend a sporting event, spend quality time with your friends. By living on our campus you will have many opportunities to enrich your experience through many activities, as well as have access to resident staff to help you in your career pursuits.

Hostel Facility

Separate hostel for boys and girls. The rooms are designed scientifically with a partition in between so as to maintain the privacy of the students despite not being alone.

Mess

Mess within the campus serves delicious balanced diet as per daily schedule in neat and clean ambience

Sports Facilities & Gymnasium

The University has large playgrounds for cricket, football, lawn tennis, basketball court as well as indoor play area & gymnasium.

ATM

There is an ATM in campus working 24*7 right at the campus.

Cafeteria

The campus is having a spacious canteen which serves hygienic, nutritious, supple & delicious breakfast, lunch and beverages.

WiFi Access

High speed WiFi internet facility is available through out the campus for all students.

Transport Facility

Transport facility from far areas to university.



Life skills development programmes like communication, team work, leadership etc. are parts of our curriculum and compulsory. It really boosted my confidence and I could able to crack my first ever professional interview easily and got placed in IT giant TCS. Thanks to Training & Placement Cell for their serious efforts for grooming students.

Himanshu Suman working with TCS

SPORTS AND RECREATION



At CPU we believe staying fit is not only beneficial for the body but also for the mind. Sports and recreation activities play a vital role in overall development of the students. Students refresh themselves by indulging in outdoor games like football, cricket and hockey. For those who prefer the indoors there are facilities for table tennis, chess and carom etc. Students can also use health clubs and other facilities.



I have pursued B.Tech in Computer Science, It has been wonderful journey whether it was academics or co-curricular. Even because of co-curricular I went out to become Internationally Rated Chess Player. I have got placed in Software Company Connection Loyalty, Pune. I would like to thank Career Point University for being my mentor and great part of my life.

Chandrakant Working with Connection Loyalty

TRAINING AND PLACEMENT CELL



Utmost importance is given to the training & placement related activities to ensure that all the graduating students receive the best placements. For this university has dedicated Training and Placement department.

Training and Placement Cell works round the year and closely coordinates with various organizations and corporate houses to know their training & recruitment schedule, process and plans. It conducts several placement activities like Campus Placement, Job Fairs, expert lectures from Industry professionals etc. Training and Placement Cell also conducts mock interviews, GD and provides soft skills training before formal placements.



Placement Highlights (Kota & Hamirpur)

No. of
Candidates Placed

3371+

Candidates
Placed so far

Companies
tie-ups

302

Companies
Visited so far

Highest Salary
Package

45

Lakhs per
Annum

Training &
Placement

100%

Placement
Assistance

STUDENT'S SPEAK



I participated in many activities like sports league, workshops and lead the hospitality team for various national & International seminars and workshops. Training & Placement Cell developed me in such a way that I had been able to crack Infosys interview in first attempt.

Akash Goyal Working with **Infosys**



Training & Placement Cell works really very hard on students & that is why CPU has highest placement record in Kota. I thank my professors and T & P Cell for providing me the best learning environment & exposure to industrial training.

Harsh Kumar working with **TCS**



Its been a privileged to be part of Career Point University as a Scholar. Regular classes, labs & training sessions helped me to be a job ready. I got many bright career options. Thanks to CPU Team.

Kirti Kakkar working with **TCS**



Being an active participant in workshops and seminars made me go through latest ongoing technologies and thus I was able to reach at this platform

Ashish Malik working with **HCL**



CPU creates an environment for innovative learning, enthusiasm for application of ideas, appreciation for growth, and guidance. For their support, inspiration & motivation I am able to run my own startup "Kabadiwala.com" successfully.

Kshitij Sharma Running own
Startup **Kabadiwala.com**



I always felt that I was lucky to be a student at Career Point University. The university aims at enhancing one's knowledge, skills and abilities. I received a lot opportunities to groom myself.

Rajat Srivastava working with
Hyundai Eng. & Construction Co. Ltd.



IIT academic system based education helped me in polishing my academic, technical & life skills. I always got involved in various activities. This boosted my confidence level & helped me to place in Byju's.

Palkit Badala working with **Byju's**



New projects & assignments sharpened my ability to analyze situation in innovative way. I got job in Wipro Limited through campus placement at Career Point University. Thanks to all.

Karan Sharma working with **Wipro**

Convocation - Many faces of success



Convocation Ceremony is an integral part of formal course completion where the chancellor confers of the degree to the graduate & post graduate students.





Academic and Career Programs

We educate students on both professional development and degree-awarding courses. They come either to enhance an already chosen career, or to move to a new one. We bring a wide array of multi-disciplinary skills to address a number of fields. Project where students will aim to resolve real world problems. The emphasis is on problem solving, teamwork and application of knowledge. The design and execution of courses makes them truly interactive. We have created a student centered learning environment where students with talent & ambition drive transform their dreams into reality.



Skill & Employability Enhancement Program (SEEP)

Communication | Presentation | Interview | Management | Confidence Building

Each student undergoes through SEEP. This program includes various courses focusing on Personality Enhancement, Employability Enhancement Job Specific skills development & Soft Skills Development. This ensures our graduates possessing a right blend of knowledge, skills and attitude to be successful.

Career Point University Offers Various Courses under following Schools:

- Career Point School of Engineering and Technology
- Career Point School of Computer Application
- Career Point School of School of Commerce and Management
- Career Point School of Health and Allied Sciences
- Career Point School of Agriculture
- Career Point School of Legal Studies and Governance
- Career Point School of Basic and Applied Science
- Career Point School of Library and Information
- Career Point School of Education
- Career Point School of Arts and Humanities
- Career Point School of Vocational Studies and skill Development



Career Point School of Engineering and Technology

The Career Point Institute of Technology aims at producing socially responsible engineers who will be leaders and innovators of tomorrow. The graduates will be capable of designing & building outstanding technological solutions and creating & managing enterprises for the development of the global economy.

The curriculum integrates different areas of engineering, mathematics and science with arts, humanities and entrepreneurship; and focuses on building a range of life skills essential for a successful career. The institute brings together outstanding academics, industry professionals, experienced researchers and the latest facilities to deliver a unique hands-on and multi-disciplinary learning experience. The emphasis is on learning by doing.

Features

- Highly Experienced Faculty with Average Experience of 10+ Years from IITs, NITs, Govt. Institutes.
- 4,888 value addition courses & 400 specializations by Leading Global Universities have been provided free of cost to our students
- 100+ publication in National and International Journals/Conferences.
- Pre-final & final year students got job offers from reputed companies or are working as Freelancers
- Students completed more than 10 projects in a session year
- More than 10 technical events (expert lectures, webinars, conferences) conducted by students in a session
- Well-equipped advanced labs
- Industrial visits in renowned industries

Value Addition Courses

- ▶ **Polytechnic Diploma (CSE) / Lateral Entry**
Duration: 3 Yrs [for class 10th pass] / 2 Yrs (Lateral Entry in 2nd Year for ITI pass / 12th PCM students)
- ▶ **B.Tech / B.Tech - Lateral Entry**
Specialization: [Computer Science & Engineering]
- ▶ **B.Tech - Artificial Intelligence & Machine Learning**
Duration: 4 Yrs for class 12th pass with PCM / 3 Yrs for Lateral Entry in 2nd Year for Polytechnic Diploma
- ▶ **B.Tech - Data Science**
- ▶ **B.Tech + M.Tech / B.Tech + MBA**
- ▶ **M.Tech**
Duration: Full Time - 2 Yrs / Part Time - 3 Yrs
- ▶ **Ph.D**





Career Point School of Computer Application

Career Point School of Computer Application has modern facilities for teaching, learning and research. The school provides a stimulating academic environment encompassing best of modern pedagogy, industry-relevant updated & advanced curriculum. The curriculum offers a wholesome coverage of technical subjects and specializations in programming, web applications, mobile app development and networking. It is further strengthened with practical, projects and industry training.

Features

- Updated Curriculum best in the region with technologies like PHP, Java, .Net, WordPress, WooCommerce, MVC Framework
- Languages like Python, R, Android App Development, Ethical Hacking & Cyber Security, IOT, Hybrid Mobile Application, Data Science etc.
- Qualified & Experienced Faculty with 10+ yrs of average exp
- 3500+ courses worth more than 2.5 Crores by Leading Global Universities have been provided free of cost to our students
- Student Development Programs and Technical Workshops
- Lectures by industry experts, entrepreneurs and technocrats
- Industry Linked Specialization

Exposure & Research

- 70+ Technical Workshops
- 50+ Expert Lectures
- 75+ Live Projects
- 5+ Nat'l & Int'l Conferences
- 50+ Research papers in Nat'l & Int'l Journals
- 5 Books & 10 chapters published by Faculty members

Lab Facility

- | | | |
|--|----------------------------------|------------------|
| ● Application Development with Android | ● IOT Lab | ● PYTHON Lab |
| ● R Programming Lab for Data Sc | ● Visual Programming Lab with C# | ● C, C++ Lab |
| ● .NET Programming with MVC Framework | ● Unix and Shell Programming Lab | ● PHP Lab |
| ● Computer Graphics & Multimedia Lab | ● Data Structures Lab | ● Java, J2EE Lab |
| ● Database Management System Lab | ● Web Technology Lab | ● Ubuntu Lab |

Programs Offered

- | | | |
|---------------------------------------|---------------------------------------|------------------------------|
| ▶ BCA [3 Years] | ▶ MCA [2 Years] | ▶ B.Sc - IT [3 Years] |
| ▶ BCA - Data Science [3 Years] | ▶ MCA - Data Science [2 Years] | ▶ M.Sc - IT [2 Year] |
| ▶ M.Sc - CS [2 Year] | ▶ PGDCA [1 Year] | ▶ Ph.D |





Career Point School of Commerce and Management

The School of Commerce and Management has been established with a vision to prepare future business leaders. Besides the curriculum, the School focuses on personality development, leadership traits to groom future managers. The School has an in-house incubation centre to assist the aspiring entrepreneurs to work on their dream projects from conception to completion. The School has industry and institutional linkages to facilitate internship, guest lectures.

Features

- 52+ academic and technical activities in Session 2019-21
- 50+ Live Projects by students for experiential learning
- Faculty with Academic & Industry Exposure having 14+ years avg experience including Qualified CA, CS cum ICSI Trainer
- Student Development Programs, Workshops & Presentation
- Lectures by industry experts, entrepreneurs and technocrats
- Entrepreneurship Development Cell to encourage Entrepreneurship among students

Academic Collaboration

- Finitatives Learning India Pvt. Ltd.(FLIP)
- Safeducate
- Backers (USA)
- ACCA (UK)

Value Addition Courses

- **Industry Linked Specialization:**
Certificate in Accounting Technicians (CAT) | Tally | NCFM Modules - National Stock Exchange Academy
Certification in Financial Markets | IIBF Modules - From Indian Institute of Banking & Finance
- **Personality Enhancement Program:**
Spoken English | Business Communication & Presentation | Relationship Mgmt | Negotiation Skills
- **Free Courses:** 100+ Industry relevant Courses from World's top Universities like Harvard, Stanford, MIT Sloan

Programs Offered

- ▶ **BBA** [3 Years]
- ▶ **BBA - Data Analytics & Visualization** [3 Years]
- ▶ **MBA - HR, Marketing, Finance, Digital Marketing, Foreign Trade** [2 Years]
- ▶ **MBA - Data Analytics & Visualization, Supply Chain Management, Health Management, Hospital Administration, Banking & Finance Family Business & Entrepreneurship** [2 Years]
- ▶ **Ph.D**
- ▶ **B.Com** [3 Years]
- ▶ **PGDM** [1 Year]





Career Point School of Health and Allied Sciences

The prime objective is to provide educational opportunity in the fields of Physiotherapy, Pharmacy, Paramedical Sciences, Public Health and the allied departments. The training and practical inputs are provided through strong industry collaborations along with leading hospital and health-care industry experts. The curriculum is designed by a blend of theory, practice and clinical exposure whereas the theoretical knowledge is provided through regular class room sessions and by engaging expert lectures.

Features

- Pharmacy courses are approved by PCI under section 12 and Govt. of Rajasthan.
- Well equipped 18 labs
- Doctorate & Postdoctoral Faculty members with 15 years of average experience
- The Faculty have published more than 28 Books
- More than 150 papers have been published in National & International Journal by students & faculty
- More than 130 papers presented by faculty & students in National & International conferences
- More than 400 Courses by Leading International Universities have been provided free of cost to our students
- Own Herbal (Medicinal) Garden for practical learning
- Students have been placed in leading pharma companies like Sun Pharma, Cipla, Macleods, Dr Reddy's, Zydus, Piramal, Lupin etc
- Regular OPD at University Campus for student's Clinical Training
- Collaboration with Govt. CHC Mandana for clinical exposure
- Regular Multi speciality camp at Nearby Villages for practical learning
- Physiotherapy Students won 14 awards in National youth festival organized by Sasakava leprosy Foundation Noida

Programs Offered

- ▶ **School of Pharmacy**
 - ▶ D. Pharm [2 Years]
 - ▶ B.Pharm [4 Years]
 - ▶ B.Pharm - Lateral Entry [3 Years]
 - ▶ M.Pharm [2 Years]
- ▶ **School of Physiotherapy**
 - ▶ BPT [4.5 Years]
 - ▶ MPT* [2 Years]
- ▶ **School of Public Health**
 - ▶ BA / B.Sc in Nutrition & Dietetics [3 Years]
 - ▶ MPH [2 Years]
- ▶ **School of Para-medical Sciences**
 - ▶ B.Sc in Medical Laboratory Technology
 - ▶ B.Sc in Clinical Optometry
 - ▶ Bachelor in Hospital Administration

*Specialization: Orthopaedics, Neurology, Cardiopulmonary, Sports Medicine





Career Point School of Science

The objective is to provide quality education to students so that they can be engaged in innovation, scientific & industrial research. The department has highly qualified faculties with good knowledge, holding M.Sc. or Ph.D. degrees from renowned institutes in India. The department is active in studies and research in the areas of ground water pollution, soil analysis, control methods of deforestation and many more.

Features

- Well equipped advance labs and Library
- Highly qualified faculty with practical experience
- Student Development Programs and Special Workshops
- Lectures by industry experts, entrepreneurs and technocrats
- Paper presentation, Science Exhibition and hands-on training

Lab Facility

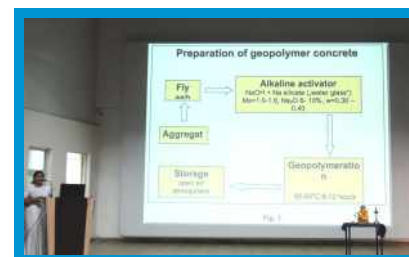
We have established highly- technically advanced labs .All labs are equipped with machines and instruments to meet the requirement of UG and PG course curriculum as well as research & development work being under taken by students and faculty.

Value Addition Courses

- **Industry Linked Specialization:** Corporate Affairs | Retail management | Banking | e-Commerce | Accountancy & Finance | Capital Market | Operation & Logistics | Real Estate Management | Media Management | PR & Advertising | Leadership
- **Personality Enhancement Program:** Spoken English | Business Communication | Presentation Skills | Relationship Management | Time Management | Negotiation Skills
- **Skills Development:** Microsoft Office Specialist | Basics of Graphic Designing | Tally etc

Programs Offered

- ▶ **B.Sc - Physics, Chemistry, Maths / Physics, Chemistry, Biology** [3 Years]
- ▶ **M.Sc - Physics / Chemistry / Zoology / Botany / Mathematics / Environmental Science** [2 Years]
- ▶ **M.Phil.** ▶ **Ph.D**





Career Point School of Agriculture

Career Point School of Agriculture has a mission to impart agricultural education for rural and urban students to bring the agricultural prosperity. The aim of the department is to create advancement in education and research with multi dimensional knowledge for our students as well as farming community.

Features

- Well Qualified & Experienced Faculty
- Value Added Program in Each Semester
- Project based learning in collaboration with industry/ Research Institutes
- Dedicated training & placement cell
- Vibrant & active student life

Lab Facility

- Plant Biotechnology, Plant Physiology & Biochemistry
- Horticulture & Plant Tissue Culture
- Seed Technology
- Agriculture Microbiology & Soil Science
- Integrated Pest Management (IPM)
- Plant Breeding and Genetics
- Agronomy & Crop Research Centre (CRC)
- Food Processing & Post Harvest Technology

Value Addition Courses

- **Industry Linked Specialization:**
Corporate Affairs | Retail Management | e-Commerce | Operation & Logistics | Leadership
- **Personality Enhancement Program:**
Spoken English | Business Communication | Presentation Skills | Time Mgmt | Marketing & Negotiation Skills
- **Skills Development:** Microsoft Office Specialist | Agriculture Processing | Smart Farming

Programs Offered

- ▶ **Diploma in Agri** (Organic Farming & Vermi Composting | Animal Husbandry & Livestock Management | High-Tech Horticulture, Veterinary Pharmacist - 1 Year)
- ▶ **B.Sc - Agriculture** [4 Years]
- ▶ **B.Sc - Agriculture + MBA** [5 Years]
- ▶ **M.Sc - Agronomy** | Horticulture | Genetics & Plant Breeding | Forestry [2 Years]
- ▶ **MBA - Agriculture** [2 Years]
- ▶ **Ph.D - All Discipline** [3 Years]





Career Point School of Legal Studies and Governance

Career Point Law School fosters the skills to comprehend and diagnose the intricacies of various legal and other inter-disciplinary issues and devise solutions to these problems through analysis and reasoning. The stimulating and interactive academic environment of the Institute helps to hone the Drafting, Research, Advocacy, Interviewing and Negotiation-skills of the students. To accomplish this, the college arranges a number of curricular and extra-curricular activities. Students are trained in essence of the substantive laws, techniques of procedural laws, methods of client counseling and skills in legal and social sciences research etc.

The Moot Court Competitions, Client Counseling Sessions, Quiz Contests, Seminars, Group Discussions and Expert Lectures etc. are regular feature the academic calendar of the School. The School also exposes its students to the 'law in action' through compulsory internships which provides free legal services to the economically weaker sections of the society as a part of community outreach programme of the School, it also offer opportunities to the students to work in co-ordination with practicing lawyers.

Features

- Advance Moot Court and Library
- Regular Legal Aid Clinic Sessions
- Live Court Visits
- Problem Based Learning Methodology
- Highly qualified faculties with practical experience
- Student Development Programs & Workshops
- Lectures by industry & legal experts & advocates
- Paper presentation
- Practical Exposure through live projects under guidance of advocates or legal experts

Value Addition Courses

- Industry Linked Specialization
- Skills Development
- Personality Enhancement Program

Programs Offered

- ▶ **BBA+LL.B** - Integrated [5 Years]
- ▶ **LLM** [2 Years]
- ▶ **PGDL** - [1 Year]
- ▶ **LL.B** [3 Years]
- ▶ **Ph.D**

Specialization: Cyber Laws, Intellectual Property Rights (IPR Laws), Labour Law, Labour Welfare & Personnel Management, Criminology and Socio Economics Crimes





Career Point School of Arts and Humanities

Career Point College of Arts and Humanities is meant for providing students an understanding of the basic principles and fundamental laws of how people process and document the human experience and culture. The college through its various activities articulate significant social, literary, and political perspectives found in humanities. The college offers courses in all traditional and specialized subjects in art, literature, humanities, music, philosophy, language, intercultural communication.

Features

- Advanced library with reading room
- Qualified faculty with practical experience
- Student Development Programs & Personality Grooming
- Lectures by experts, authors, administrators, guest faculty & renowned personalities
- Paper presentation

Value Addition Courses

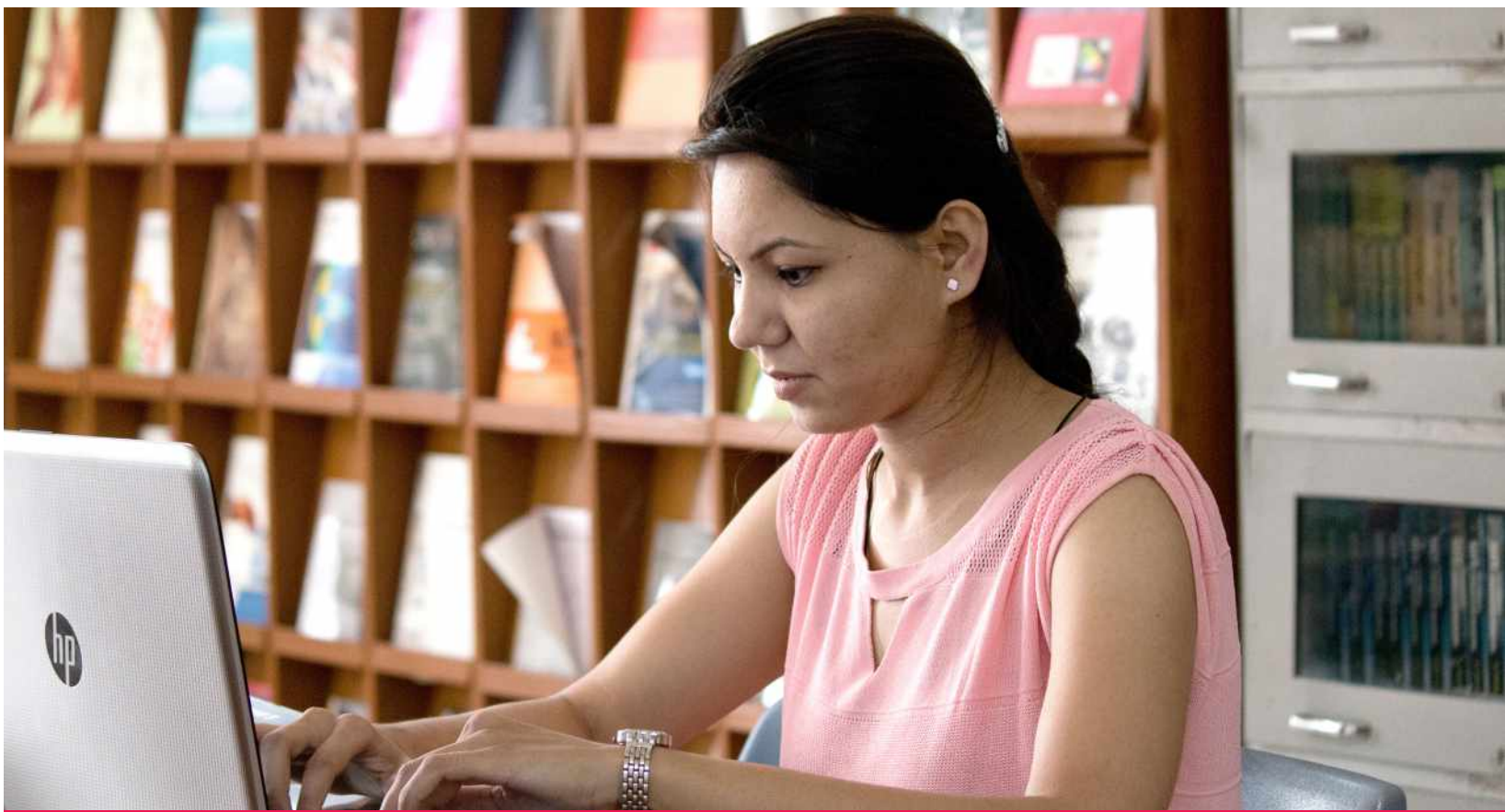
- **Industry Linked Specialization:**
Corporate Affairs | Retail management | Banking | e-commerce | Accountancy & Finance | Capital Market | Operation & logistics | Real Estate Management | Media Management | PR & Advertising | Leadership
- **Personality Enhancement Program:**
Spoken English | Business Communication | Presentation Skills | Relationship Management | Time Management | Negotiation Skills
- **Skills Development:** Microsoft Office Specialist | Basics of Graphic Designing | Tally etc

Programs Offered

- ▶ BA [3 Years]
- ▶ MA [2 Years]
- ▶ MSW [2 Years]
- ▶ Ph.D

Specialization: Political Science, Public Administration, History, Geography, International Relation, English, Sociology, Psychology, Hindi Literature





Career Point School of Library and Information

Career Point College of Library and Information Science is meant for providing students an understanding of the basic principles and fundamental laws of library & information science and enable them to understand the functions and purposes of the libraries in the changing social and academic set-up. The college is imparting techniques of modern methods in librarianship and management of libraries. In this pursuit, the college aims to (1) Acquaint the students with the structure and development of the Universe of Knowledge and Research Methods (2) Make the students proficient in advanced techniques of Classification, Cataloguing and Documentation, and (3) Develop specialized knowledge and skills in respect of organization and management of different kinds of libraries and reading materials.

Features

- Advanced library with reading room and computer lab
- Qualified faculty with practical experience
- Student Development Programs
- Lectures by industry experts

Value Addition Courses

- Industry Linked Specialization
- Personality Enhancement Program
- Skills Development

Programs Offered

- ▶ B.Lib [1 Year]
- ▶ M.Lib [1 Year]
- ▶ Ph.D

"We'll get you ahead of the pack"





Career Point School of Education

Career Point College of Education has been established with a commitment of training of competent teachers for Primary, Secondary and Sr. Secondary levels of education. This college aim to groom the students through excellent teaching, self-learning and presentations for developing an analytical mind and pragmatic approach for churning out professionals in the field of education.

College uniqueness lies in strong internship opportunities where students will learn to link theory and practice and acquire necessary skills to teach effectively in various classroom situations.

Features

- Highly qualified faculty with practical experience
- Technologically equipped class rooms
- Projects & Teaching Practice
- Student Development Programs and Special Workshops
- Lectures by experts and renowned academicians
- Co-curricular activities, Projects, Paper presentation etc.

- ▶ MA - Education [2 Years]
- ▶ B.Sc. + B.Ed. [4 Years]
- ▶ Ph.D

**"Unique opportunities to
unlock your potential for leadership"**





Career Point

School of Vocational Studies and Skill Development

India would need over 500 million skilled people by 2022 across various industrial and service sectors. While there are millions of jobs opportunities across these sectors; industries continue struggling for skilled talent.

Considering the growing importance to offer skill based training programmes and with the introduction of National Vocational Education Qualification Framework (NVEQF), college offers skill building courses in various sectors to create corporate ready workforce.

Features

- Sector specific courses
- Well-equipped advanced labs
- Emphasis on hands-on experience
- Student development programs & technical workshops
- Lectures by industry experts, entrepreneurs & technocrats
- End-to-end skill building focusing on improving the employability

Programs Offered

► Bachelor of Vocation in Various Sectors (3 Year Degree Course with Multiple Exit Options)

- B.Voc. Degree [3 Years for 10+2 pass all stream]
- Advance Diploma [2 Years for 10+2 pass all stream]
- Diploma [1 Year for 10+2 pass all stream]

Sectors: Banking and Financial Management, Information Technology, Sales & Marketing, Hotel Management, Tourism and Hospitality, Automobiles, Construction technology etc

► Industry Oriented Diploma and Certificate Courses

"Learn technical skills and get hands on experience to secure competitive positions in the job market"



Courses Offered by Career Point University

We educate students in Science, Technology, Management, Agriculture, Pharmacy, Health Science, Commerce, Law and Humanities with most practical methods to ensure professional development for a rewarding career. For this we run various program under the following institutions -

A. Course for Class 10th pass Students:

Department / Centre	Course
Engineering & Technology	● Polytechnic Diploma in Engineering
	● Polytechnic Diploma [Dual Degree with Flexible exit option at Diploma Level]
	● Polytechnic Diploma in Engineering [College Transfer] Branches: Sheet Meta, Automotive System, Hybrid Mob App Development, Digital Mkt, Cyber Security
Agriculture	● Diploma in Organic Farming & Vermicomposting
	● Diploma in Animal Husbandry & Live Stock Management
	● Diploma in High-Tech Horticulture

B. Courses for class 12th pass & Graduate Students:

Department / Centre	For Class 12 th Pass / A-Level	For Graduate
Engineering & Technology	<ul style="list-style-type: none"> ● Polytechnic Diploma in Engineering [Lateral Entry - Direct Admission in 2nd Year] [Civil, Computer Science, Electrical, Mechanical] ● B. Tech [Civil, Electrical, Mechanical, Computer Science & Engineering, Machine Learning & Artificial Intelligence, Data Science, Electric Vehicle, Renewable Energy, Robotics & Automation, Automotive System, Applied Robotics] ● B. Tech [Lateral Entry - Direct Admission in 2nd Year] ● B. Tech + M. Tech/ MBA 	<ul style="list-style-type: none"> ● M.Tech Branches: CE, CSE, ME, EE, ECE, Digital Communication, Power System, Renewable Energy, CAD-CAM, Industrial, Structural, Transportation, VLSI, Mobile Computing, Environmental, Construction Technology, Power System, Renewal Energy, Water Resources, IT, Software Artificial Intelligence, Embed System, Power System, Control & Instrumentation, RF & Microwave, Thermal / Internal Combustion & Automobiles, Automobile, Industrial Manufacturing / Production, Automation, Fluidics
Computer Applications	<ul style="list-style-type: none"> ● B.Sc [IT] ● BCA [Bachelor in Computer Application] ● BCA [Data Science] ● BCA [Multimedia & Animation] ● BCA + MCA 	<ul style="list-style-type: none"> ● MCA ● MCA [Data Science] ● MCA [Lateral Entry - Direct Admission 2nd Year] ● M.Sc [IT] ● PGDCA [PG Diploma in Computer Application]
Health & Allied Sciences	<ul style="list-style-type: none"> ● B.Sc/ BA [Nutrition & Dietetics] ● BHA [Bachelor in Hospital Admin] ● BPT [Bachelor in Physiotherapy] ● B.Sc [Clinical Optometry] ● B.Sc [Machine Laboratory Technology] ● BPH / B.Sc [Public Health] 	<ul style="list-style-type: none"> ● MPT [Master of Physiotherapy] Specialization: Orthopaedics, Neurology, Cardiopulmonary, Sports Medicine ● M.Sc [Nutrition & Dietetics] ● MBA [Hospital Management] ● MBA [Health Management] ● MPH [Master in Public Health]
Commerce & Management	<ul style="list-style-type: none"> ● B.Com (Hons) ● BBA (Hons) - Data Analytics & Visualization ● BBA+MBA ● Certificate Accounting Technician Specialization: HR, E-Business & Digital Marketing, International Business, Logistics, Financial Analysis 	<ul style="list-style-type: none"> ● MBA [Marketing, HR, Finance, Digital Marketing Agri Business, International Trade] ● MBA [Logistic & Supply Chain Mgmt with Safeducate] ● MBA [Banking & Finance with FLIP] ● MBA [Hospital / Health Management] ● MBA [Family Business & Entrepreneurship] ● MMM - Master in Marketing Management ● PGDM
Pharmaceutical Science	<ul style="list-style-type: none"> ● D. Pharm [Diploma in Pharmacy] ● B. Pharm [Bachelor in Pharmacy] 	<ul style="list-style-type: none"> ● M.Sc [Pharmaceutical Chemistry] ● M. Pharm [Master in Pharmacy] Specialization: Clinical & Hospital Pharmacy, Hospital Administration, Pharmacovigilance & Drug Therapy Management, Retail Operations Management
Agriculture	<ul style="list-style-type: none"> ● B.Sc [Agriculture] ● B.Sc [Agriculture+MBA (Agro Business)] 	<ul style="list-style-type: none"> ● M.Sc (Agriculture) Specialization: Agronomy, Horticulture, Forestry, Plant Breeding & Genetics

Department / Centre	For Class 12 th Pass / A-Level	For Graduate
Basic & Applied Science	<ul style="list-style-type: none"> ● B.Sc - [Maths] ● B.Sc - [Biology] 	<ul style="list-style-type: none"> ● M.Sc - Physics ● M.Sc - Chemistry ● M.Sc - Maths ● M.Sc - Botany ● M.Sc - Zoology ● M.Sc - Environment Science
Law	● BBA-LLB [Integrated]	● LLB
Education	● B.Sc-B.Ed [Integrated]	● MA [Education]
Arts (Humanities)	<ul style="list-style-type: none"> ● BA [Political Science, Public Administration, History, Geography, International Relation, English, Sociology] ● BSW [Social Work] 	<ul style="list-style-type: none"> ● MA [Political Science, Public Administration, History, Geography, International Relation, Hindi Literature] ● MSW [Master of Social Work] Specialization: Family & Child Welfare, Personnel Management and Industrial Relation
Library Science	-	<ul style="list-style-type: none"> ● B.Lib. ● M.Lib.

C. Courses after Post Graduation

● LL.M.
● PG Diploma in Law <i>Specialization: Arbitration & Conciliation, Company & Commercial law, Criminology, Cyber Law, Intellectual Property Right, Labour law, Personal law, IPR Law, Forensic Science,</i>
● M.Phil - Various Subjects
● PhD - Various Subjects (In all department)

How to obtain Application Form

- 1. In Person:** On cash payment of ₹ 1000 from University Campus & City Admission Office.
- 2. Online:**
 - Apply online and pay application fee through Net Banking / Credit Card / Debit Card.
 - Download application Form from website and send completed application form to the campus where you wish to take admission along with Demand draft of ₹ 1000
- 3. By Post:** Send demand draft of ₹1000 in favour of Career Point University, payable at Kota to corporate office. Please mention your name, address, mobile number, course/campus on the back side of demand draft.



Eligibility & Admission Criteria

- 1. Nationality:** a) The applicant should be an Indian Resident / NRI / OCI / PIO
b) Foreigners are also eligible as per "International Students Admission Procedure"

Courses After Class 10th

Program	Duration	Admission Eligibility & Other Details
Engineering & Technology		
Polytechnic Diploma	3 Years (6 Semesters)	<ul style="list-style-type: none"> Class 10th pass or O-Level or equivalent Branches: Sheet Metal, Automotive Sys., Hybrid Mob App Development, Digital Mkt., Cyber Security For College Transfer: Student has to meet grade equivalence & Transfer criteria of CPU.
Polytechnic Diploma + B.Tech [Dual Degree with Flexible exit option at Diploma Level]	6 Years (12 Semesters)	
Polytechnic Diploma [College Transfer]	As per the entry level	

Courses After Class 12th

Program	Duration	Admission Eligibility & Other Details
Engineering & Technology		
Polytechnic Diploma [Lateral Entry-Direct Admission in 2 nd Yr]	2 Years (4 Semesters)	<ul style="list-style-type: none"> 12th Pass [PCM] or A-Level or 2-Yrs ITI or equivalent Branches: Civil, Computer Science, Mechanical, Electrical 12th Pass [PCM] or A-Level or 2-Yrs ITI or equivalent
Polytechnic + B.Tech	5 Years	
B.Tech [Bachelor of Technology]	4 Years (8 Semesters)	
B.Tech + M.Tech / MBA [Dual Degree with flexible exit option at B.Tech Level]	5 Years (10 Semesters)	<ul style="list-style-type: none"> 10+2 Pass [PCM] or A-Level or equivalent Branches: [Civil, Electrical, Mechanical, Computer Science & Engineering- Machine Learning & Artificial Intelligence, Data Science & visualization, Internet of Things (IOT), Cloud Technology & Information, Security, Data Analytics, Electric Vehicle, Renewable Energy, Robotics & Automation, Automotive System, Applied Robotics] For Lateral Entry in 2nd Year: Polytechnic Diploma OR B.Sc [Maths] or B.Sc [CS/IT] or equivalent For College Transfer: Student has to meet grade equivalence & Transfer criteria of CPU.
B.Tech [Lateral Entry - Direct in 2 nd Yr]	3 Years (6 Semesters)	
B.Tech [College/University Transfer]	As per the entry level	
Computer Application & IT		
B.Sc [IT]	3 Years	10+2 or A-Level [Any Stream] or equivalent
BCA [Bachelor of Computer Application]	(6 Semesters)	
BCA + MCA	5 Years	
Management & Commerce		
BBA-Hons [Bachelor of Business Admin.]	3 Years	10+2 or A-Level [Any Stream] or equivalent
BBA+MBA	5 Years	
B.Com-Hons. [Bachelor of Commerce]	3 Years	10+2 or A-Level [PCB / PCM / Commerce] or equivalent
Health & Allied Sciences		
D.Pharm [Diploma in Pharmacy]	2 Years	10+2 or A-Level [with PCM / PCB] or equivalent
B.Pharm [Bachelor of Pharmacy]	4 Years	
BPT [Bachelor of Physiotherapy]	4.5 Years	10+2 with PCB or equivalent
B.Sc [Medical Laboratory Technology, Clinical Optometry]	3 Years	10+2 with PCB or equivalent
BHA [Bachelor of Hospital Admin]	3 Years	10+2 with PCB or equivalent
LAW		
BBA-LLB / BA-LL.B [Integrated]	5 Years	10+2 or A-Level [Any Stream] or equivalent OR valid CLAT score
Agriculture		
B.Sc - Hons [Agriculture]	4 Years	10+2 or A-Level (English, PCM / Bio) or 10+2 with Agriculture or equivalent
B.Sc - ABM [Agri Business Management]	5 Years	10+2 with PCB or PCM of Agriculture
Basic & Applied Sciences		
B.Sc [Math / Biology]	3 Years	10+2 with PCM or PCB

Program	Duration	Admission Eligibility & Other Details
Education		
B.Sc-B.Ed [Integrated]	4 Years	10+2 (PCM/B) 50% Marks. Relaxation of 5% marks (SC/ST/OBC Candidate)
Arts (Humanities)		
BA [Specialization: Political Science, Public Administration, History, Geography, International Relations, English, Sociology]	3 Years	■ 10+2 or A-Level [Any Stream] or equivalent ■ All Subjects

Courses After Graduation

Program	Duration	Admission Eligibility & Other Details
Engineering & Technology		
M.Tech [Civil Engineering] [Specialization: Civil, Environmental Engineering & Mgmt, Structural, Transportation Engineering, Water Resources Engineering]	Full Time: 2 Yrs Part Time: 3 Yrs	B.E./B. Tech. or AMIE or equivalent in Civil Engineering / Civil / Infrastructure Engineering, Architectural Engineering
M.Tech [Computer Science & Technology] [Specialization: Computer Science Engineering, Mobile Computing, Information Technology, Artificial Intelligence, Software Engineering]		BE/B.Tech or AMIE in any engineering discipline or M.Sc in any science discipline or MCA or equivalent
M.Tech [Electrical Engineering] [Specialization: Electrical, Power System Engineering, Control & Instrumentation]		B.E./B. Tech. or AMIE (or equivalent) in Electronics & Communication / Telecommunication Engineering / Electrical Engineering / Instrumentation Engineering
M.Tech [Electronics & Communication] [Specialization: Electronic & Communication, Digital Communication Engineering, VLSI Design, Embedded System, RF & Microwave]		B.E./B. Tech. or AMIE (or equivalent) in Electronics & Communication / Telecommunication Engineering / Electrical Engineering / Instrumentation Engineering
M.Tech [Mechanical Engineering] [Specialization: Thermal Engineering / Internal Combustion & Automobiles, Automobile Engineering, Industrial & Manufacturing Engineering / Production Engineering, CAD-CAM Engineering, Renewal Energy Technology]		B.E./B. Tech./AMIE or equivalent in Mechanical Engineering /Automobile Engineering / Aeronautical / Aerospace Engineering / Chemical Engineering / Industrial & Production / Mechatronics /Manufacturing Science /Automobile Engineering / M.Sc in any science discipline.
Computer Application		
MCA [Master of Computer Application]	2 Years	Passed BCA / Bachelor Degree in Computer Science Engineering or equivalent Degree. OR Passed B.Sc / B.Com / BA with Mathematics at 10+2 Level or at Graduation Level
M.Sc [Information Technology]	2 Years	B.Sc (IT/CS/Physics/Maths/Electronics) or BCA Or B.Tech./BE (Computer Science/Informational Technology) or equivalent.
PGDCA [PG Diploma in Computer App.]	1 Year	Graduation in any discipline
Management & Commerce		
PGDM [PG Diploma in Management] [Specialization: Marketing, HR, Finance, Interior Design, International Business, Agri Business Mgmt, Logistic & Supply Chain Mgmt, Health Care Management, Estate & Infra Mgmt]	1 Year	Graduation in any discipline or equivalent
MBA [Marketing, HR, Finance, Digital Mkt., Agri Business Mgmt., International Trade]	2 Years	<ul style="list-style-type: none"> ■ Bachelor's degree (Any Stream) and personal interview OR 80 percentile in MAT/CAT/XAT OR more than 600 marks in GMAT ■ For Family Business Management Course: Candidates must have either entrepreneurship goal OR family business setup
MBA [Logistic & Supply Chain with Safeducate]		
MBA [Banking & Finance with FLIP]		
MBA [Hospital Management]		
MBA [Heath Management]		
MBA [Family Business & Entrepreneurship]		

Program	Duration	Admission Eligibility & Other Details
Health & Allied Sciences		
M. Pharm [Master of Pharmacy]	2 Years	B.Pharm or equivalent
M.Sc [Nutrition & Dietetics]	2 Years	■ B.Sc (Nutrition & Dietetics) or B.Sc (PCB) with minimum 50%
MPT [Master of Physiotherapy]	2 Years	■ Bachelor’s Degree in Physiotherapy (4½ years Full Time) including internship with min 50% marks. ■ Specialization: Orthopaedics, Neurology Cardio-Pulmonary, Sports Medicines
MPH [Master of Public Health]	2 Years	Bachelor's Degree in any discipline with 50% marks should have at least two years experience in Health Sector.
MBA [Hospital Management]	2 Years	Bachelor’s Degree in Medical, Pharmacy, Nursing or Science from a recognized university with 50% marks. OR have at least two years work experience in Health Sector.
MBA [Health Management]	2 Years	
LAW		
LLB	3 Years	Graduation in Any Stream or equivalent (Minimum 45% for Gen & 40% SC / ST / OBC)
LL.M	2 Years	Pass with Minimum 50% aggregate marks in LL.B.
Agriculture		
M.Sc [Agriculture / Horticulture / Forestry / Genetics & Plant Breeding]	2 Years	B.Sc Agriculture or equivalent.
Basic & Applied Science		
M.Sc [Branch: Physics, Chemistry, Maths, Botany, Zoology, Industrial Chemistry Microbiology, Environment Science]	2 Years	B.Sc with equivalent stream
Education		
MA [Education]	2 Years	Graduation in any Discipline
Planning		
M.Plan [Master of Planning] Subjects: Environment, Infrastructure, Land, Use, Town, Transportation, Planning	2 Years	■ Bachelor's Degree (or equivalent) in Architecture/EnvironmentalEngineering/Civil Engineering/ Planning/ Law OR ■ Master's Degree (or equivalent) in Geography/ Economics/ Sociology /Environmental Science/ Social Work /Development Studies/ Policy Studies/ Political Science.
Arts (Humanities)		
MA	2 Years	■ Graduation in Any Stream ■ All Subject
MSW [Master of Social Work] Specialization: Family & Child Welfare, Personnel Management & Industrial Relation, Urban & Rural Community Development	2 Year (Annual System)	Graduation in any discipline
Library & Information Science		
B. Lib [Bachelor of Library Science & Information Technology]	1 Year (Annual System)	Graduation in any discipline
M. Lib [Master of Library Science & Information Technology]	1 Year (Annual System)	B. Lib in Library/information Science OR equivalent

Courses After Post Graduation

Program	Duration	Admission Eligibility & Other Details
Research & Higher Studies		
M.Phil	3 Year	Post Graduation with 55% (50% for the SC, ST OBC/PH)
Ph.D		
Legal Studies		
PG Diploma in Law [Criminology / Cyber Law, Labour Law, Intellectual Property]	1 Year	BA/B.Sc with Criminology, Forensic Science, Forensic science, Computer Application, Computer Science, Sociology or Psychology or LL.B. or five year law integrated course.

Note: Relaxation of 5% marks in qualifying examination for SC/ST/OBC students as per government policy.

Course Fee (Session 2021-22)

Courses	Course Fee (INR) for Students from India/Nepal/Bhutan/Bangladesh/Sri Lanka				For Afganistan Students			Course Fee in (USD) for Other Country		
	Fee Scheme	Tuition Fee	Exam Fee	Development Fee	Tuition Fee	Exam Fee	Development Fee	Tuition Fee / Annum	Minimum Fee \$	Tuition + Other (Annual)
Courses After Class 10th or Equivalent										
Polytechnic Diploma in Engineering (CSE)	Semester	16000	1500	2000	22000	1500	2000	700	50	100
Course After 12th or Equivalent										
B.Tech (CSE)	Semester	48000	3000	8000	58000	3000	8000	1200	100	200
B.Tech (AI-ML, DS)/ (ML)	Semester	54000	3000	8000	62000	3000	8000	1400	100	200
B.Tech + M.B.A/ M. Tech	Semester	48000	3000	8000	58000	3000	8000	1400	100	200
BBA	Semester	22000	3000	1000	27000	3000	2000	700	100	200
BBA (Data Analytics & Visualization)	Semester	32000	3000	1000	36000	3000	2000	800	100	200
BBA + MBA	Semester	22000	3000	1000	27000	3000	2000	700	100	200
BCA (Bachelor of Computer Application)	Semester	19000	3000	3000	25000	3000	3000	700	100	200
BCA (Data Science)	Semester	30000	3000	3000	35000	3000	3000	800	100	200
B.Sc (IT)	Semester	19000	3000	3000	25000	3000	3000	700	100	200
BCA + MCA	Semester	19000	3000	3000	25000	3000	3000	700	100	200
B.Com (Honors)	Semester	18000	3000	1000	23000	3000	2000	600	100	200
BA (Political Sc., Sociology, Public Admin, English Lit., Geography, Psychology)	Annual	14000	3000	2000	12000	1500	1000	700	50	100
BA (International Relation)	Annual	14000	3000	1000	12000	1500	1000	700	50	100
BBA + LLB	Semester	21000	3000	1000	27000	3000	1000	700	100	200
B.Sc-B.Ed (Integrated)	Annual	38000	3000	10000	23500	1500	5000	800	50	100
B.Sc.	Annual	20000	3000	3000	13000	1500	1500	700	50	100
B.Sc. Agri	Semester	26000	3000	6000	30000	3000	5000	600	100	200
B.Sc. + MBA (Agri)	Semester	26000	3000	6000	30000	3000	5000	600	100	200
B.Sc. ABM	Semester	26000	3000	6000	30000	3000	5000	600	100	200
BSc -Public Health [BPH]	Annual	21000	3000	3000	15000	1500	1500	1000	50	100
BHA -Hospital Admin.	Semester	19000	3000	3000	22000	3000	3000	900	100	200
B.Sc - Optometry	Annual	45000	3000	5000	28000	1500	2500	1200	100	200
BSc - Medical Lab Technology	Annual	45000	3000	5000	28000	1500	2500	1000	50	100
B.Sc-Nutrition & Dietetics	Annual	21000	3000	1000	13000	1500	1000	700	50	100
B.P.T. (Physiotherapy)	Annual	54000	3000	8000	37000	1500	4000	1350	50	100
B.Pharma	Semester	35000	3000	8000	42000	3000	8000	1200	100	200
B.Pharma (Lateral)	Semester	35000	3000	8000	42000	3000	8000	1200	100	200
D.Pharma	Semester	42000	3000	10000	-	-	-	1200	100	200
After Graduation										
M.Tech.	Semester	46000	3000	4000	50000	3000	4000	1200	100	200
M.Tech. (Part Time)	Semester	46000	3000	4000	50000	3000	4000	1200	100	200
MA (Political Science, Public Administration, Geography, English, Sociology, International Relation, History, Hindi)	Annual	16000	3000	1000	11000	1500	1000	650	50	100
MSW	Annual	16000	3000	1000	11000	1500	1000	650	50	100
MA (Education)	Annual	26000	3000	2000	15000	1500	1000	650	50	100
MBA (Master of Business Administration)	Semester	52000	3000	3000	62000	3000	3000	500	100	200
MBA (Data Analytics & Visualization)	Semester	65000	3000	3000	75000	3000	3000	1200	100	200
MBA (Banking & Capital Market, Supply Chain Logistic Management)	Semester	65000	3000	3000	75000	3000	3000	1200	100	200
MBA (Family Business & Entrepreneurship)	Semester	65000	3000	3000	75000	3000	3000	1200	100	200
MBA (Hospital / Health Management)	Semester	65000	3000	3000	75000	3000	3000	1200	100	200
MMM (Masters in Marketing Management)	Semester	52000	3000	3000	60000	3000	3000	1200	100	200
MCA	Semester	24000	3000	2000	27000	3000	3000	900	100	200
MCA (Data Science)	Semester	33000	3000	2000	37000	3000	3000	900	100	200

*Specialization - Data Analytics & Visualization, Banking & Capital Market, Supply Chain Logistic Mgmt., (Family Business & Entrepreneurship, Hospital Management/ Health Management

MCA (Lateral Entry - Direct Admission in 2 nd Year)	Semester	24000	3000	2000	27000	3000	3000	900	100	200
M.Sc (Information Technology)	Semester	24000	3000	2000	27000	3000	3000	900	100	200
M.Sc (Computer Science)	Semester	24000	3000	2000	27000	3000	3000	900	100	200
LL.B.	Semester	16000	3000	1000	20000	3000	1000	700	100	200
LLM	Semester	10000	3000	1000	12000	3000	1000	700	100	200
Post Graduate Diploma in Law	Annual	11000	3000	1000	9000	1500	1000	650	50	100
M.Sc. Agri	Semester	26000	3000	4000	30000	3000	3000	900	100	200
MSc (P, C, M, B, Z)	Annual	23000	3000	5000	14000	1500	2500	850	50	100
B.Lib/ B.Sc-Lib. Sc	Annual	16000	3000	1000	11000	1500	1000	650	50	100
M. Lib/ M.Sc-Lib. Sc	Annual	17000	3000	1000	12000	1500	1000	650	50	100
PGDCA	Annual	16000	3000	1000	10000	1500	1000	1000	50	100
PGDM (Post Graduate Diploma in Mgmt) (HR & Marketing)	Semester	50000	3000	2000	57000	3000	2000	1200	100	200
MPH/M.Sc -Public Health	Semester	48000	3000	2000	52000	3000	2000	1200	100	200
MHA -Hospital Admin.	Semester	48000	3000	2000	52000	3000	2000	1200	100	200
MPT(Ortho, Neuro, Sports)	Annual	75000	3000	8000	44000	1500	4000	1350	50	100
M.Sc. (Pharmaceutical Chemistry)	Semester	23000	3000	2000	26000	3000	2000	900	100	200
M.Sc (Environment Science)	Annual	24000	3000	3000	14500	1500	2000	850	50	100
M.Sc (Nutrition & Dietetics)	Annual	37000	3000	3000	21000	1500	2000	850	50	100
M. Pharm (Pharmaceutics)	Semester	30000	3000	3000	40000	3000	3000	1200	100	200
M. Pharm (Pharmacology)	Semester	30000	3000	3000	40000	3000	3000	1200	100	200
After Post Graduation										
M.Phil	Semester	28000	2000	2000	38000	2000	2000	4000		
Ph.D	Annual	1,82,000 - 3,20,000			240000-500000			6800 (Full)		

*Tuition fee to paid in two equal Instalments

Admission Fee (One Time) : ₹ 5000 for students from India / Nepal / Bhutan / Bangladesh / Sri Lanka / Afghanistan
: ₹ 3000 Caution Fee for students from India / Nepal / Bhutan / Bangladesh / Sri Lanka / Afghanistan
: \$ 150 (USD) for UG Course and \$ 200 (USD) for PG Course for students from other countries

College Transfer / Migration

Students seeking change from their existing college to CPU, may apply for the College Transfer.
For more details contact: 0744-6630551, 80941-57999 or e-mail at: info@cpuniverse.in

Scholarship & Other Benefits [Only for Indian Students]

1. Early Admission Benefit (All Courses):

Admission Taken & Full Fee Deposited Before Below Date	Early Admission Benefit (One Time)	
	B.Tech/B.Pharm/M.Tech/MBA/M.Pharm/BPT/MPT	Other Courses
Till 15 th July 2021	5000	3000
Till 31 st July 2021	3000	2000
Till 15 th August 2021	2000	1000
After 15 th August 2021	No early admission benefit	

- Early Admission benefit is additional to the scholarship under any other criteria.
- Student who join the course early may attend English Language & Personality Enhancement course (at CPU, Kota) before the commencement of classes schedule to begin in 2nd week of June. No fee shall be charged for this.

2. For B.Tech Program

- On the basis on performance in JEE (Main) / State Entrance Test / 12th Board performance

% in Graduation	Scholarship in Tuition Fee
Above 95%	40%
90% to 94.99%	30%
85% to 89.99%	25%
80% to 84.99%	20%
75% to 79.99%	15%
70% to 74.99%	10%
60% to 69.99%	5%

3. For M.Tech/MBA/M.Pharm/MPT

%age in Graduation (Agg %age) [1]	Scholarship in Tuition Fee
Above 90%	40%
85% to 89.99%	30%
75% to 84.99%	15%
60% to 74.99%	10%

4. For Engineering Diploma/Other Undergraduate/Post Graduate Course [2]

Performance in Qualifying Examination based on %age [1]	Scholarship in Tuition Fee
Above 90%	20%
85% - 89.99%	10%
75% - 84.99%	5%

5. For Old Career Point / Career Point University Students

Criteria	Scholarship in Tuition Fee
Old Career Point OR CPU students seeking admission in B.Tech, M.Tech OR MBA	5% Additional Scholarship in Tuition Fee

6. Based on Scholarship Test CP-STAR

Criteria	Scholarship in Tuition Fee
Based on performance in CP-STAR	up to 40%

7. Reduction in Scholarship after 1st Cutoff Date

- Till 31st July (1st Cutoff Date):** No Deduction.
- 01st August to 15th August:** 5% less than what mentioned in Scholarship Table.
- 15th August to 31st August:** 10% less than what mentioned in the scholarship table.
- After 31st August:** No scholarship

8. [1] Conversion Criteria: %age = CGPA x 9.5 | [2] No scholarship will be provided for D.Pharm, B.Sc (Agri), B.Sc - B.Ed, M.Phil & Ph.D program.

9. Other Benefits

- Education Loan Support:** Career Point University provides assistance & guidance in providing education loan to students.
- Online Support:** Parents / Student can get all the information regarding student's performance in semester / internal exams, his / her attendance, fee deposition status, can register grievance or pay fees online through Student Parent Zone.

10. Government / Non-government scholarship: Career Point University does not take responsibility for any Government / Non-government scholarship other than scholarship provided by the University

Note:

- Above scholarship is linked with admission date (irrespective of date of result declaration)
- To avail merit scholarship, student has to submit supporting documents in original along with 1 set of photocopies.

Hostel Facility & Fee

It's always recommended by experts that student should stay in hostel while they are pursuing their higher studies. Few of the advantages of hostel life are -

- You get more time for studies, activities and you save time in traveling.
- Hostel life gives you sense of responsibility as well as independence.
- Hostel life teaches you team work, sense of unity and adjustment etc.
- All round development of personality is possible during hostel life. In IITs, more than 90% students live at hostel.

Hostel	Location	Occupancy	Type	Indian Students		International Students	Facilities Includes	Other Charges (in ₹)
				Security	Annual Fee (in ₹)	Annual Fee (in USD)		
Career Point University, Kota (Rajasthan)								
Boys	Nilgiri Hostel at CPU	Single	Air-Cooled	5000	60000	1200	Lodging, Mess, Security	Electricity Charges Extra for AC room over certain consumption
		Double			54000	1000		
	Nalanda House at CPU	Single	AC	-	-	2200		
		Double			-	1600		
Girls	At CP-Gurukul Campus	Single	AC	-	90000	1500	Lodging, Mess, Laundry, Security, Transport to Campus	
		Double			80000	1300		

Note:

1. Above Fee is for two semester (10 months). Over stay Fee shall be charged extra on pro-rata basis.
2. Exemption from mess facility at Kota is not allowed. Mess charges include Breakfast, Tea, Lunch and Dinner.
3. Student has to take hostel for both semesters.
4. Hostel fee may be revised by 10 to 15% every year.
5. If a student avail hostel facility during summer, then he/she has to pay fee separately for the summer semester.

Fee Deposition Method

1. **Online:** Visit website and pay fee online using Net Banking / Credit Card / Debit Card (Transaction Charges Extra)
2. **Through Bank Demand Draft:** Demand Draft should be in favour of "Career Point University" Payable at Kota, Rajasthan
3. **Anywhere in India in ICICI Bank:** Deposit the course fee using Fee Deposition Challan directly in ICICI bank anywhere in India. You may download Fee Deposition Challan from website.
4. **Directly in HDFC bank (University account):** Deposit fee in University HDFC account No. 01671450000394 either by cash or through net banking. Submit fee deposition acknowledgment slip to admission/account office of the University.

Note: After fee deposition through mode 3 & 4, please email details at info@cpuniverse.in or inform head office (Kota) over phone.

Fee Refund Policy

1. Full fee except Admission Fee will be refunded in case student withdraw admission before the start of classes.
2. No refund is permissible in case the student withdraws after start of the classes.
3. Admission fee is not refundable under any circumstances.
4. Caution money will be refunded in full.
5. Hostel Fee will be refunded after proportioned deducting of fee till the month of withdrawal. If student leave hostel without completing session then caution money shall not be refunded.
6. Request to withdrawal and fee refund should be made on the prescribed application form available at the admission/registrar office. Along with fee refund application, student has to submit the ID card, Original Fee Receipt & Due clearance Certificate.
7. Refund will be processed by the finance office of the university upon receiving approval from the Director (Admission) and will be paid by crossed cheque in the name of the student or father/guardian after 90 days from the date of receipt.
8. All dispute pertaining shall fall within the jurisdiction of Kota (Rajasthan) and Hamirpur (Himachal Pradesh) for CPU Kota and CPU Hamirpur, respectively. The registrar of the concerning institute shall be legal person for all such matters.



THE
CPU CAMPUS LIFE.
TRULY
EXTRAORDINARY!



Eminent Personalities @ CPU



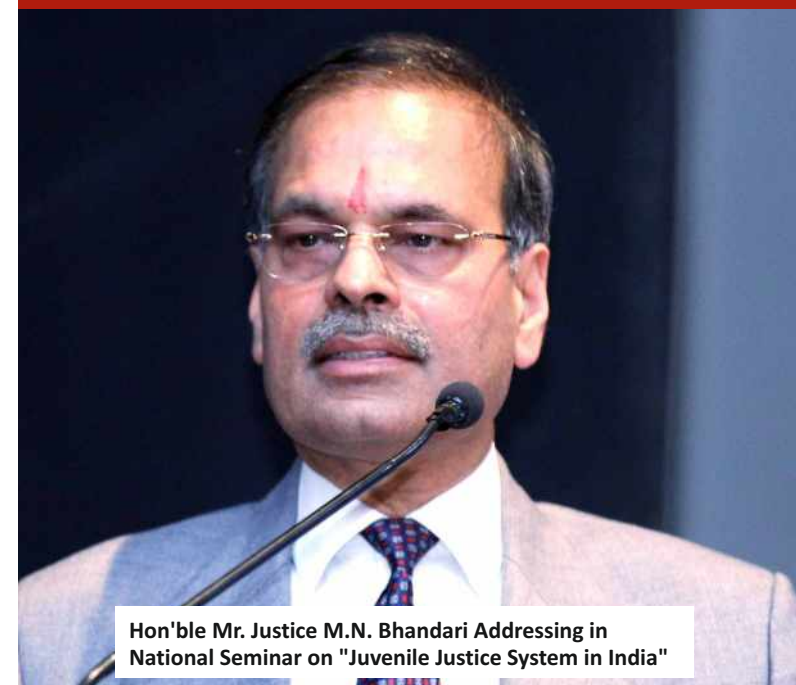
Mr. Gajendra Singh Shekhawat (Minister of State for Agriculture & Farmers Welfare) Addressing in International Conference for Agriculture at CPU



Hon'ble Vice President Mr. Venkaiah Naidu addressing 9th Indian Youth Science Congress organised by CPU Hamirpur



Sh Anurag Thakur, Minister of State for Corporate Affairs



Hon'ble Mr. Justice M.N. Bhandari Addressing in National Seminar on "Juvenile Justice System in India"



Hon'ble Governor of HP Shri Bandaru Dattatraya & Former Chief Minister Sh. Prem Kr. Dhumal at CPU Campus



Marie Haga, Exc. Director, Global Crop Diversity Trust, Bonn, Germany visited CPU Hamirpur



Mr. Manish Sisodiya, Deputy CM Govt. of Delhi, addressed a Talk Show on Education Policies



Mr. Piyush Goyal, Minister of Railways of India



Felicitation of CP Group by Mr. Narendra Singh Tomar, Union Minister of Steel, Mines, Labour and Employment



Hon'ble Mr. Justice Vivek Singh Thakur Addressing in National Seminar on "Understanding Environment & Biodiversity Law"



Prof. Prem Kr. Dhumal Ho'ble Former CM (H.P.) at Inaugural Ceremony of CPU Hamirpur



Hon'ble Padma Shri Awardee Dr. Anil Prakash Joshi in National Conference by (NABARD) Govt. of India



Mr. Nitin Gadkari, Minister of Road Transport & Highways of India addressing at CP Auditorium

Experiential Learning @ CPU

Technique of farming without soil

Agriculture Students have demonstrated hydroponic technique of farming that doesn't require soil for growth of plants. In this technique plants get their nutrition only through water. 8 to 10 plants are placed in a series in cylindrical pots and water is passed through a motor & all the minerals of soil are mixed in water in liquid form.



Go Kart for Elite Karting Championship 2017:

Students from Mechanical and Electrical branch jointly developed Go- Kart for Elite Karting Championship 2017 held at Bhopal. This was an international level Go-Karting event for all technical students. Due to their innovative ideas, excellent design and meticulous execution with set technical specifications; CPU students achieved 6th position among more than 100 teams in finale.



Students Spreading Wings with their Mentors Authored Books:

1. **Effect of Mango Shell and Nut Shell Ash as Pavement Material (ISBN 978-3-330-03578-2)** – by Tiza Toryila Michael, M.Tech Student and Er. Sitesh Kumar Singh, Assoc. Professor
2. **Comparison of Flexural Strength Values of Palm Kernel Concrete** – by TizaToryila Michael, Obam S. Ogah & Ukpong U. Emmanuel, M.Tech students



Pattal Making Machine:

There is an ample opportunity for the traditional patravali due to its environment-friendly nature and biodegradability. An attempt of fabricating low-cost and more ergonomic pattal making machine is hereby made. The machine is manually operated by a foot pedal, has a fixed upper die and a moveable lower die, and is composed of a heating element.



Briquette Compressing Machine:

- Mass Production of Biomass Briquettes.
- The Machine provides Rapid Prototyping & Mass Production of Biomass Briquettes and it requires less time to fill the patterns.
- The machine can form six briquettes at a time with the involvement of single person.
- The briquettes compression force is high as compare to manually operation, which provides briquettes with high strength, good texture, less water content ratio.



Low Cost Hybrid Multi-Tasking Vehicle by Mechanical Branch students

A group of final year Mechanical Engineering students have developed a hybrid and economic transport vehicle which is beneficial to farmers and traders of small towns and villages. The engine is capable of generating a maximum transmitting power of 10 BHP and it can operate on battery or petrol. The fuel efficiency is 45 km per liter and it can carry a maximum load of 2 tonnes.



Bogie Mechanism: The model was developed as simulation for multi-purpose use in daily life. The design has no springs or stub axles for each wheel, allowing the bogie to climb over the obstacles. This mechanism is suitable for carrying items in shopping malls; one can find a separate place for carrying kids. This mechanism maintains the chassis in a balanced position, and avoids shocks even on an irregular surface.

Electricity Generation from Swing: Mechanical Engineering, B. Tech students conceived and developed innovative idea of generating electricity from the swing.

From Campus to Few of Our Proud Alumni

Leading Corporate working in Top MNCs

STUDENT'S SPEAK



I am from B.Tech Computer Science. Faculties are very innovative in teaching and they help me to get best knowledge. CPU follows IIT system which enhances overall skills of a student. Training and Placement department at CPU groom students to face interviews. Due to the endless effects of Training and Placement department I have placed in Infosys. I thank CPU for all they have done for me thank you.

Priyanka Deore working with **Infosys**

It's been a privileged to be part of Career Point University as a Scholar. Regular classes, labs & training sessions helped me to be a job ready. Training and Placement Cell helped me to gain more confidence and providing us the way to crack interviews and debates, group discussion etc. So with the help of this I got many bright career options. Thanks to CPU Team.

Ambika working with **Xerox**



At Career Point University I have developed many skills. I participated in many co-curricular activities. As a part of Immix I was student coordinator for the entire event. I have hosted many events in CPU like seminars and conferences. These activities has groomed my personality many folds. With the best mix of academics and co-curricular activities I could get the job in Microsoft EPS. Overall it has been a great experience and learning at Career Point University.

Romish working with **Microsoft EPS**

I am currently pursuing B.Tech from CPU Kota. CPU follows IIT, Delhi based academic system which enables us to gain more practical knowledge rather than to be a book worm. Teachers over here are cooperative and helping in nature. Academic system motivates us to explore ourselves more by providing us opportunities to participate in club activities.

Shreya Jain working with **TCS**



I participated in many activities like sports league, workshops & lead the hospitality team for various national & International seminars & workshops. Training & Placement Cell developed me in such a way that i had been able to crack Axis Bank interview in first attempt.

Neeraj Dhiman Working with **Axis Bank**



ADITI GOYAL

working with **Capgemini**



PRIYA LAKHOTIA

working with **BYJU'S**



AKSHITA TIWARI

working with **Collabera**



ARPIT HAWA

working with **Capgemini**



SIMERPREET KAUR

working with **FiveS Digital**



ROMISH

working with **Microsoft**



HARSHIT CHANDROL

working with **amazon**



AMBIKA

working with **xerox**



TANMAY BHUSHAN

working with **Linked in**



PRIYAMVIDA SAXENA

working with **IBM**



NEERAJ DHIMAN

working with **AXIS BANK**



KOKILA KUMARI

working with **accenture**



PALKIT BADALA

working with **BYJU'S**



ASHISH KUMAR

working with **HCL**



RUPAL RAJAWAT

working with **Infosys**



RAJAT RANA

working with **K**



GARIMA BISHT

working with **Collabera**



SAKSHI GUPTA

working with **IIFL**



YOGESH SONI

working with **Cognizant**



HARSH KUMAR

working with **TATA**

Placement Highlights

Total Companies **450+**

Total Job Offers **3100+**

Highest Salary Package **34 Lac**



Chancellor's Message

In our efforts to deliver quality & career led education, we put more emphasis on determining one to one contact and also be very much attentive to vital needs of each student. Our faculty team relentlessly monitors progress of every student and guide them accordingly on the way to achieve all success in their life and career ahead.

Pramod Maheshwari [B.Tech, IIT-Delhi]



CAREER POINT UNIVERSITY

Contact Details:

Career Point University, Kota (Raj.)

Campus: Alaniya , Kota - 325 003 (Raj.)

Ph: +91-0744-6630551, 80941-56999, 80941-57999

website: www.cpuniverse.in | email: info@cpuniverse.in

Career Point University, Hamirpur (H.P.)

Campus: Bhoranj (Tikker-Kharwarian), Hamirpur-176041 (H.P.)

Ph: +91-1972-269701 / 02 / 03, 96253-80006, 96253-80007

website: www.cpuh.in | email: hp@cpuniverse.in

National Helpline No: +91-80941-56999, 80941-57999 | www.cpuniverse.in | info@cpuniverse.in

International Helpline No: +91-90791-34715, 90791-34716 | www.cpur.in | oia@cpur.edu.in